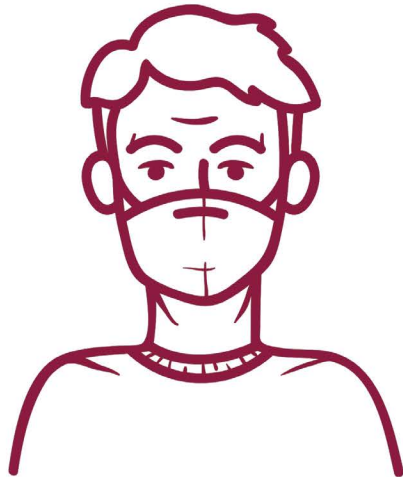




Face Covering REQUIRED

Maintain a
safe distance
whenever possible.



Effective Monday, August 2, 2021 and until further notice, **face coverings will be required to be worn by students, faculty, staff and visitors in all Mitchell Community College buildings and locations** used by the College. This includes face coverings being worn at all times in classrooms and laboratories.

mitchellcc.edu
Equal Opportunity College



Rev. 07/30/21
CV-01



Mitchell
COMMUNITY COLLEGE



[cdc.gov/coronavirus](https://www.cdc.gov/coronavirus)